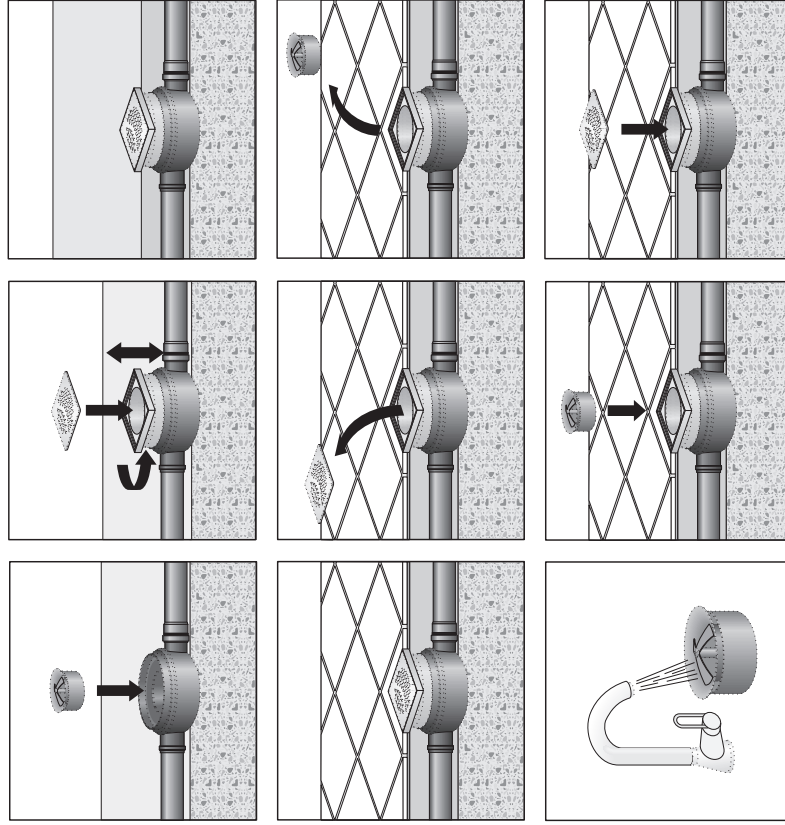
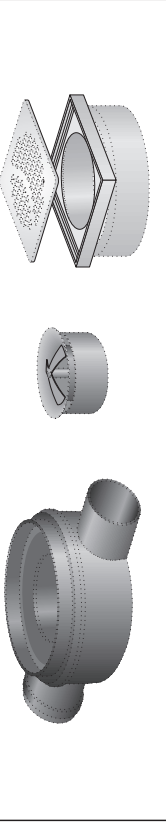
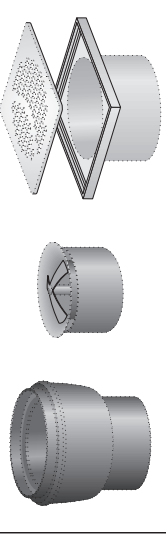




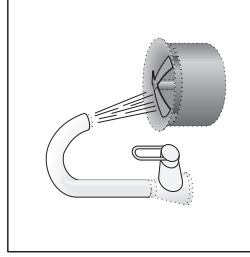
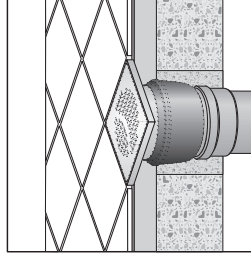
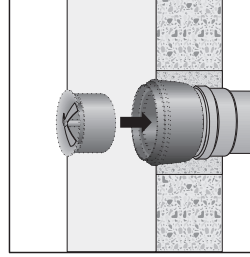
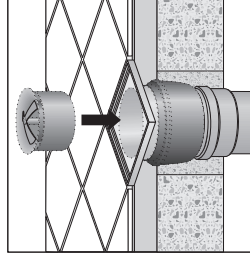
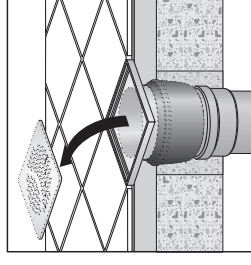
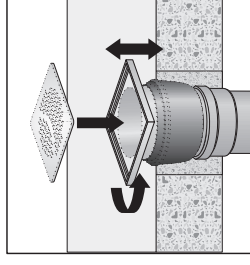
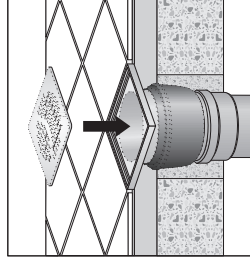
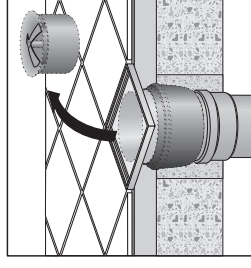
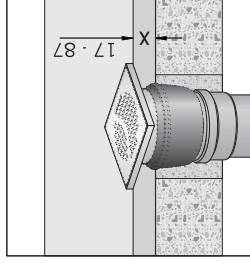
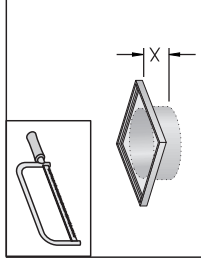
Kunststoffablauf, waagrecht



Kunststoffablauf, senkrecht



Diese Einbauanleitung bitte dem Endverbraucher aushändigen



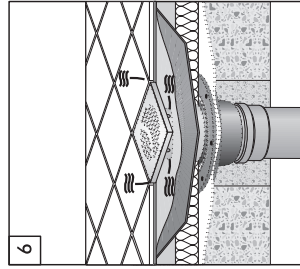
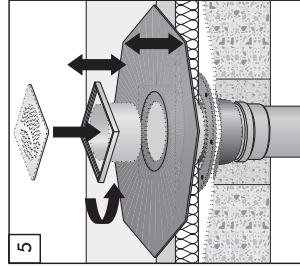
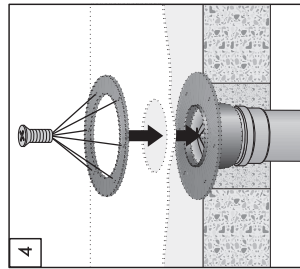
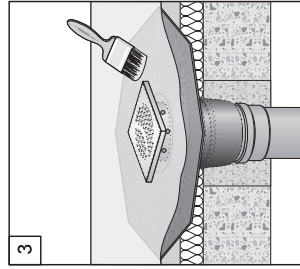
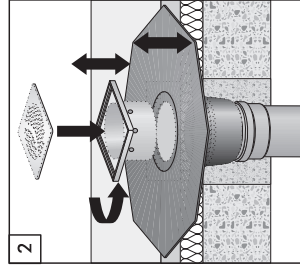
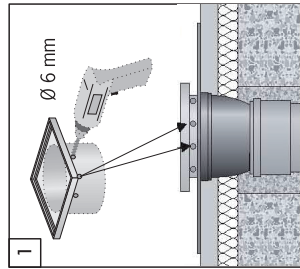
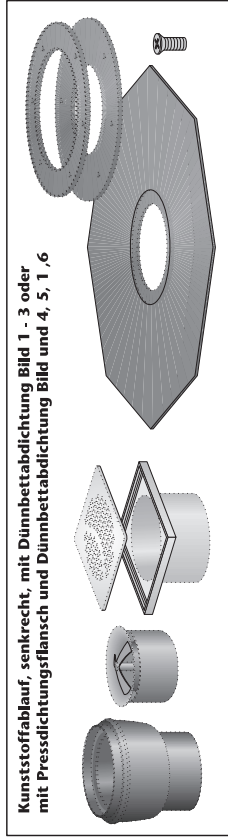
ACO Passavant GmbH
Entwässern Edelstahl / Kunststoff Rohrsysteme
Abscheide-technik
Pumpen/Hebeanlagen
Im Gewerbepark 11c
36457 Stadtlengsfeld
Tel. 036965 8190
Fax 036965 819361
www.aco-haustechnik.de
Entwässern Gusseisen
Postfach 1158
65322 Aarbergen
Tel. 06120 287000
Fax 06120 287610
Die ACO Gruppe. Auf eine starke Familie ist Verlass.

HT 371C/06/2007 - LTC - Sach-Nr. 173.01.79 C
Technische Änderungen vorbehalten





Kunststoffablauf, senkrecht, mit Dünnbettabichtung Bild 1 - 3 oder mit Pressdichtungsfansch und Dünnbettabichtung Bild 4, 5, 1, 6



Kunststoffablauf, senkrecht, mit Pressdichtungsfansch Bild 1 - 3 oder mit Verlängerung und 2 Pressdichtungsfanschen Bild 1 + 2, 4 - 8

